

**UKARIA**  
Cultural Centre

**CONCERT SEATING CAPACITY AND AREAS**

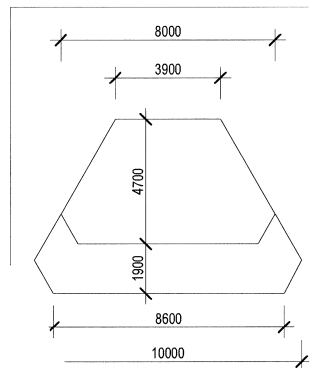
**SEATING TOTAL 218**

**MAIN AREA - LOWER LEVEL 137**

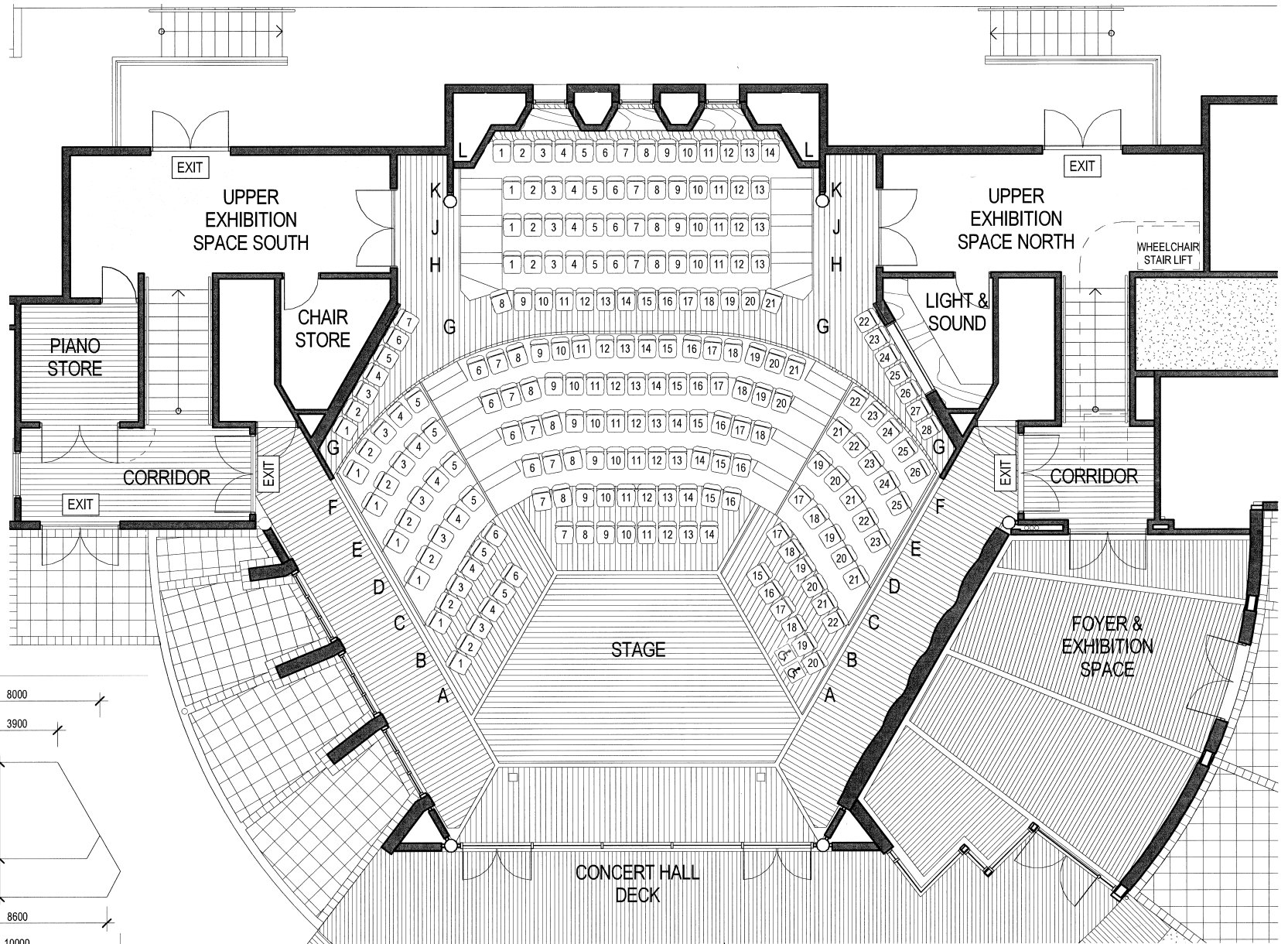
- ROW A 20
- ROW B 22
- ROW C 21
- ROW D 23
- ROW E 25
- ROW F 26

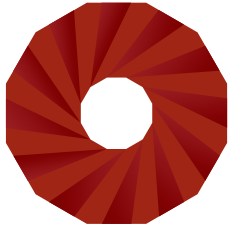
**UPPER LEVEL 81**

- ROW G 28
- ROW H 13
- ROW J 13
- ROW K 13
- ROW L 14



**STAGE DIMENSIONS**





# UKARIA

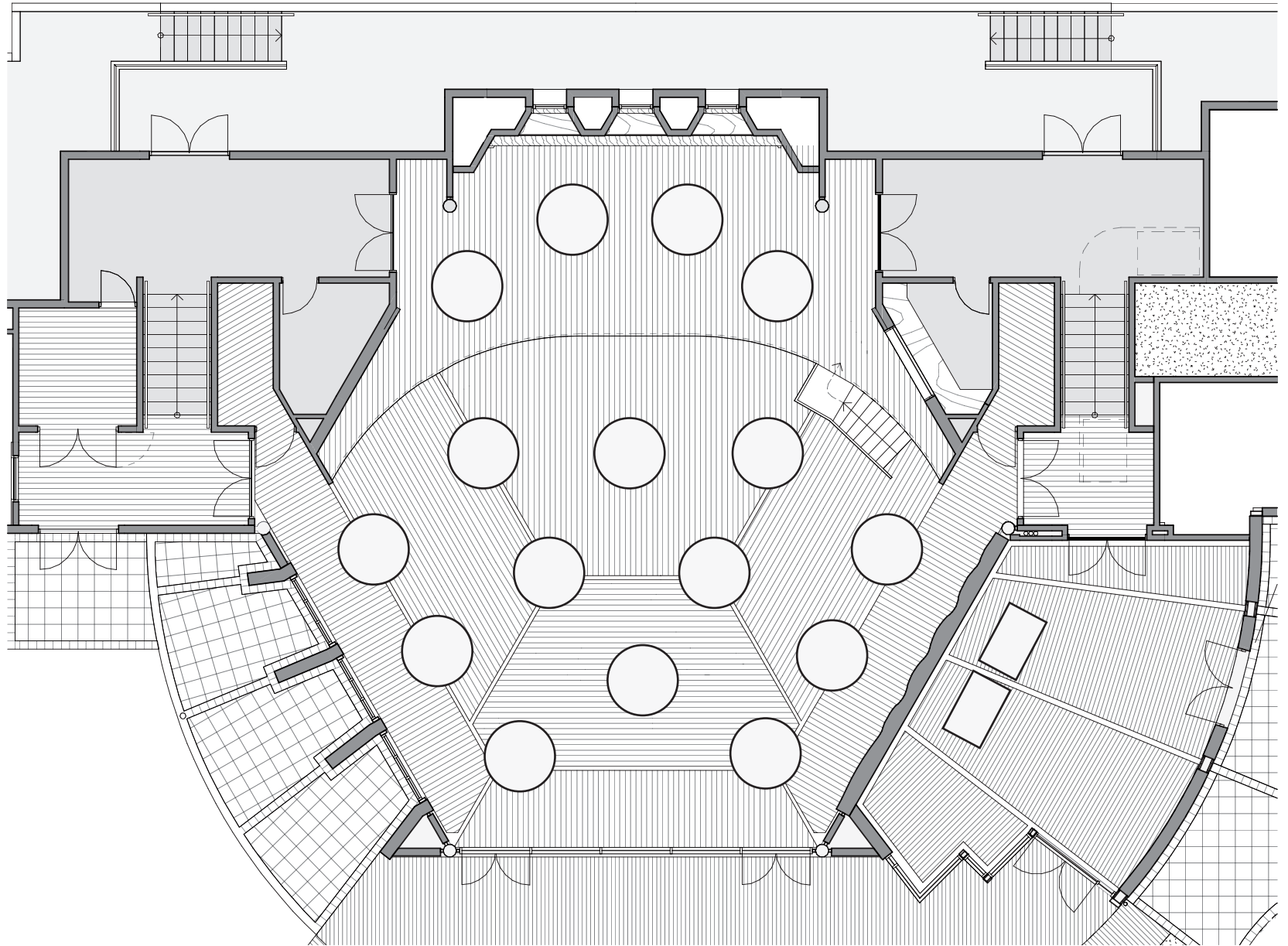
Cultural Centre

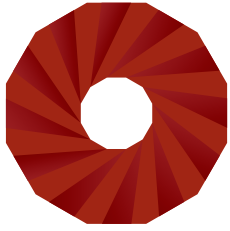
TWO LEVELS OF FLAT FLOOR SET UP WITH ROUND DINING TABLES

**BANQUET STYLE DINING**  
16 tables x 10 PAX | 160 guests

**CONFERENCE STYLE**  
16 tables x 8 PAX | 128 guests

Using 1800mm round tables.





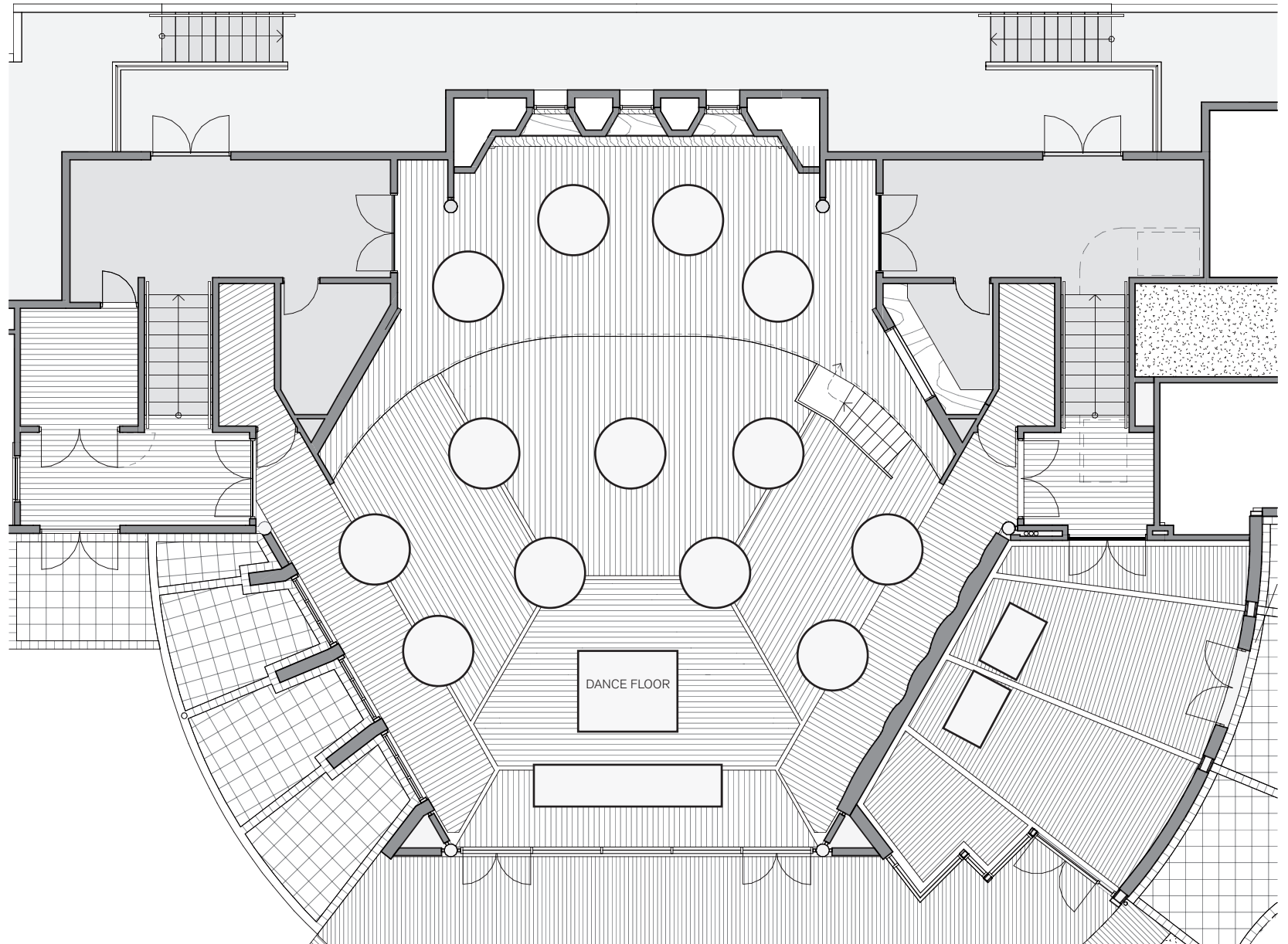
**UKARIA**  
Cultural Centre

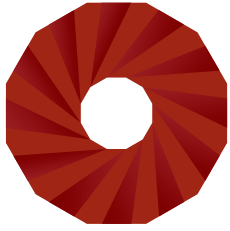
**WEDDING**

TWO LEVELS OF FLAT  
FLOOR SET UP WITH  
ROUND DINING TABLES  
AND HEAD TABLE FOR  
BRIDAL PARTY

**13 TABLES x 10 PAX | 130 guests**

**HEAD TABLE | 10 guests**





# UKARIA

Cultural Centre

## BANQUET SET UP IN CONCERT HALL

**80 Guests total**

**2 long tables | 44 Guests**

**2 long tables | 18 Guests**

Note: if dance floor required,  
capacity decreases

